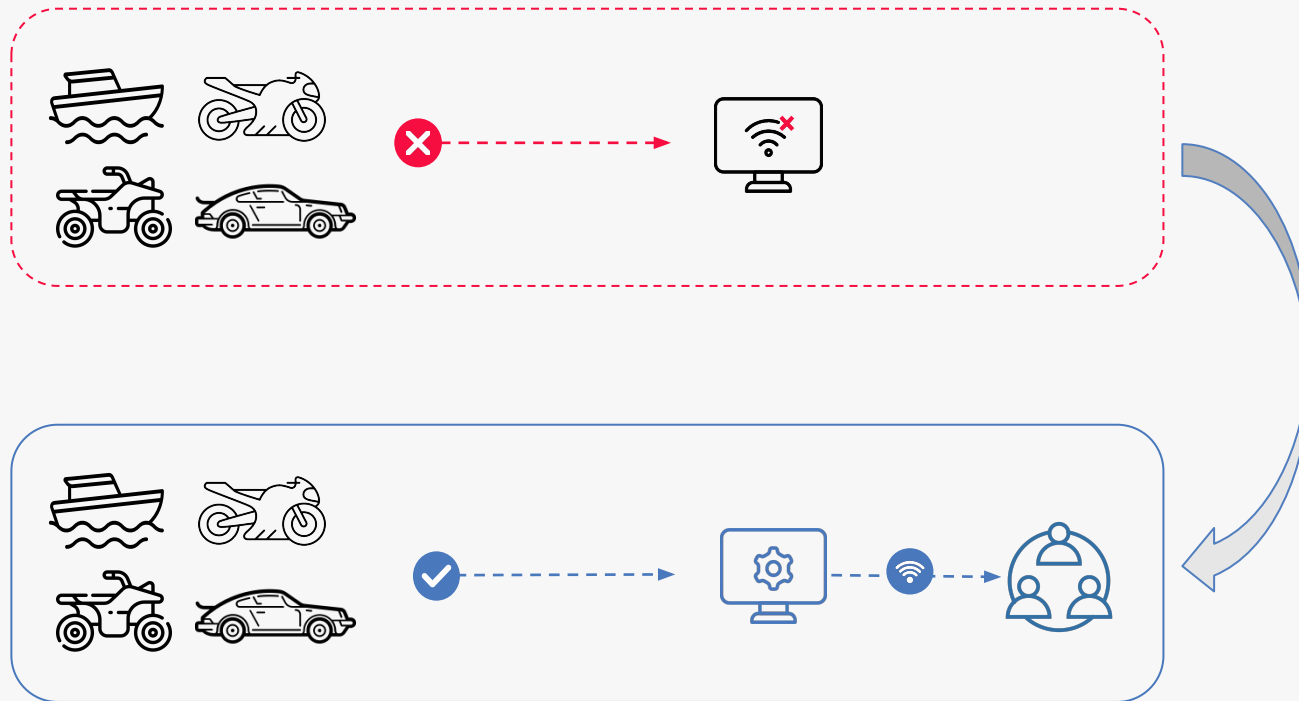




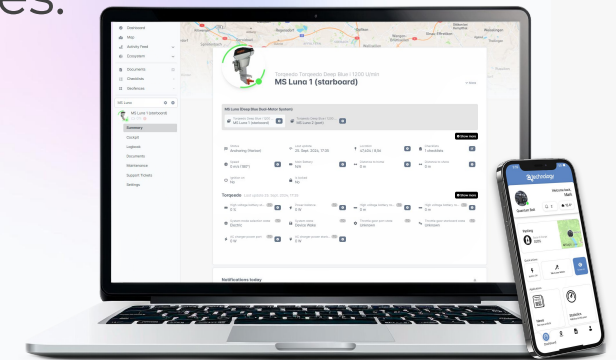
Shaping the future of mobility
through a connected ecosystem
that **unites manufacturers,
their partners and end-users**



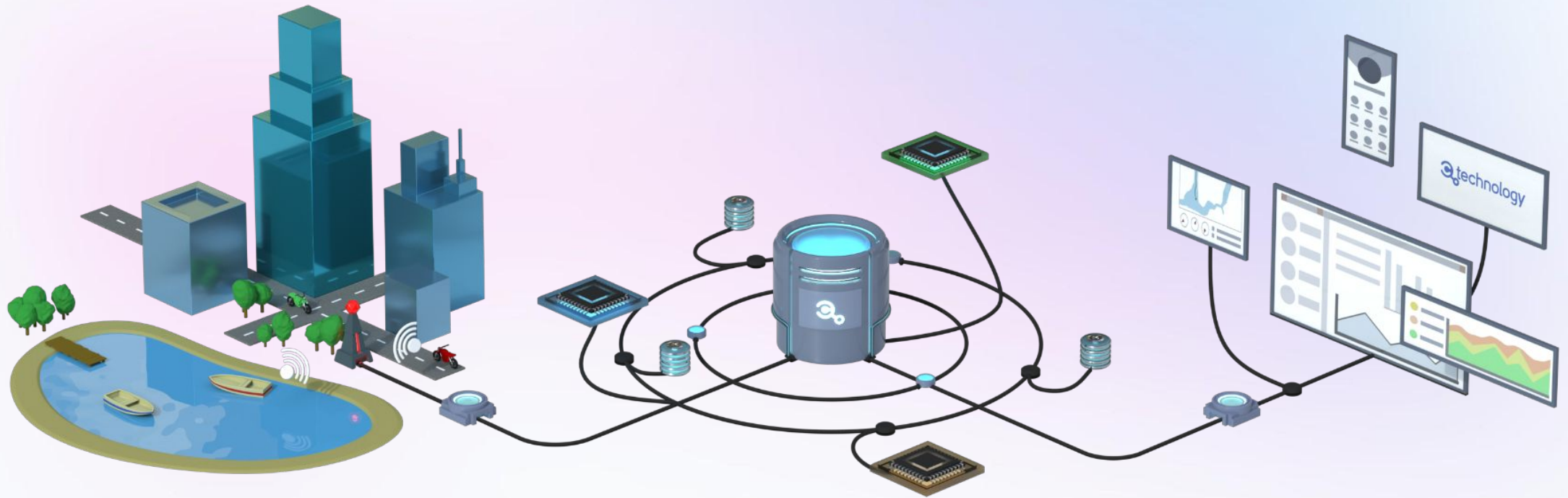
Bridge the Data Gap: Connected Vehicles from Production to End-Customers.



OEMs are at the core, with **real-time data** access from **production** to **after-sales**, boosting performance, marketing, and sales.



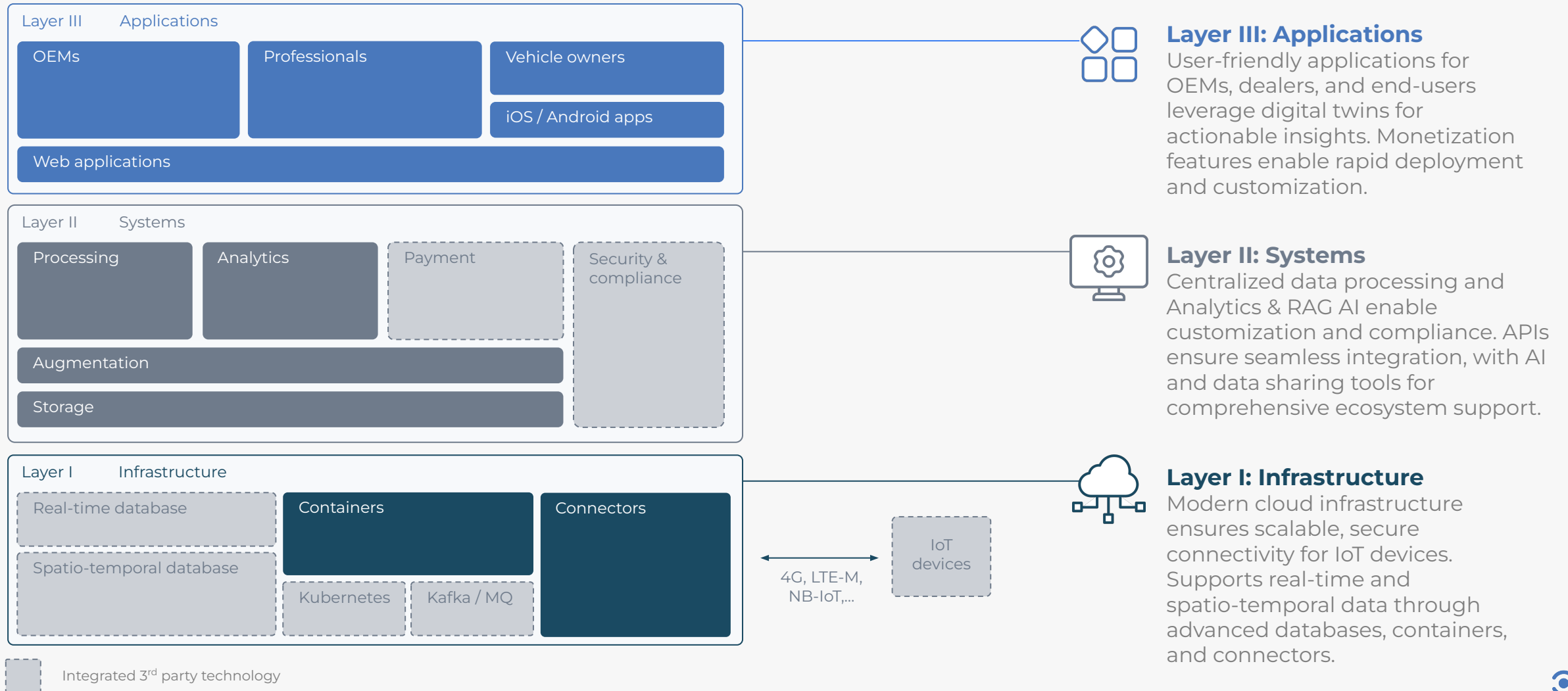
The Solution: A Complete Cloud Journey from Raw Data to Refined Applications.



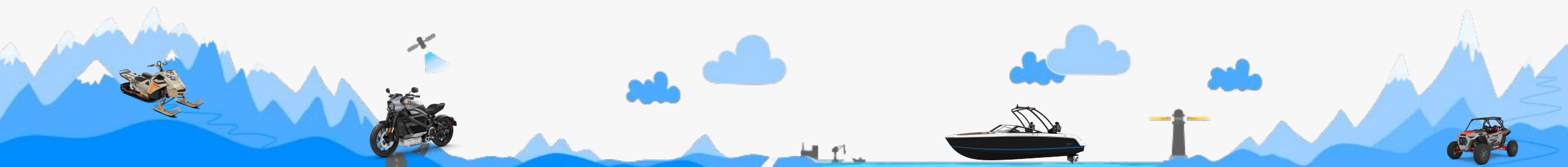
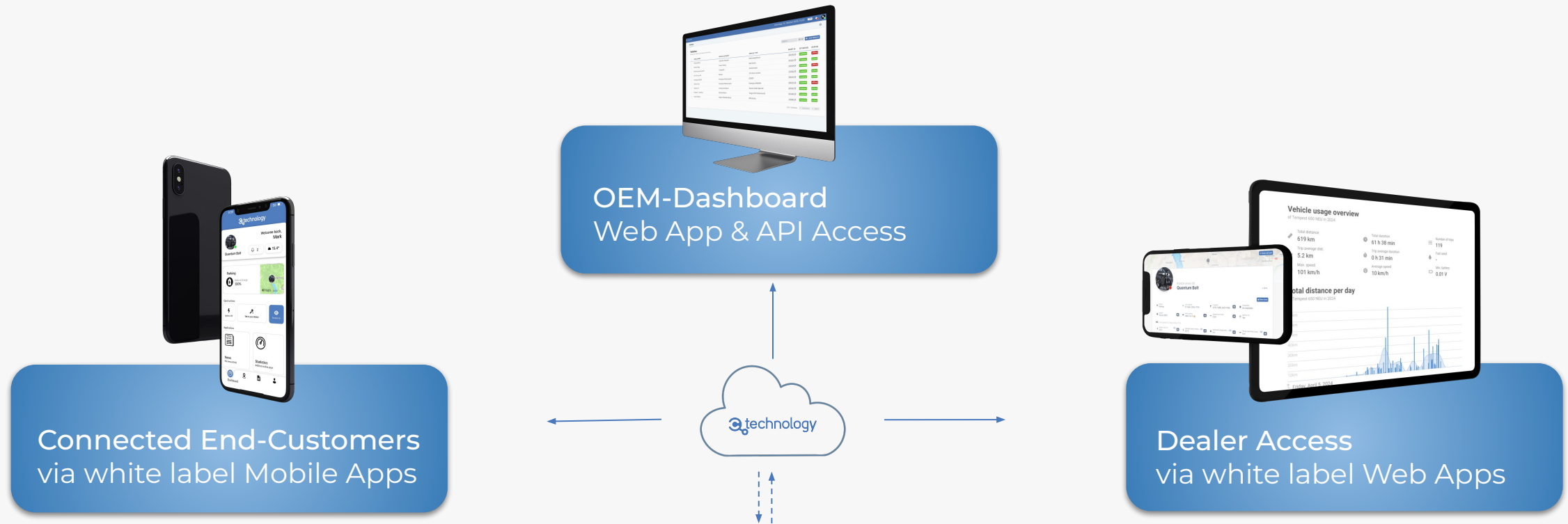
A SaaS platform that connects vehicles, OEMs, authorized dealers, and end users, driving improved performance, deeper customer engagement, and unlocking new revenue streams and cost savings.



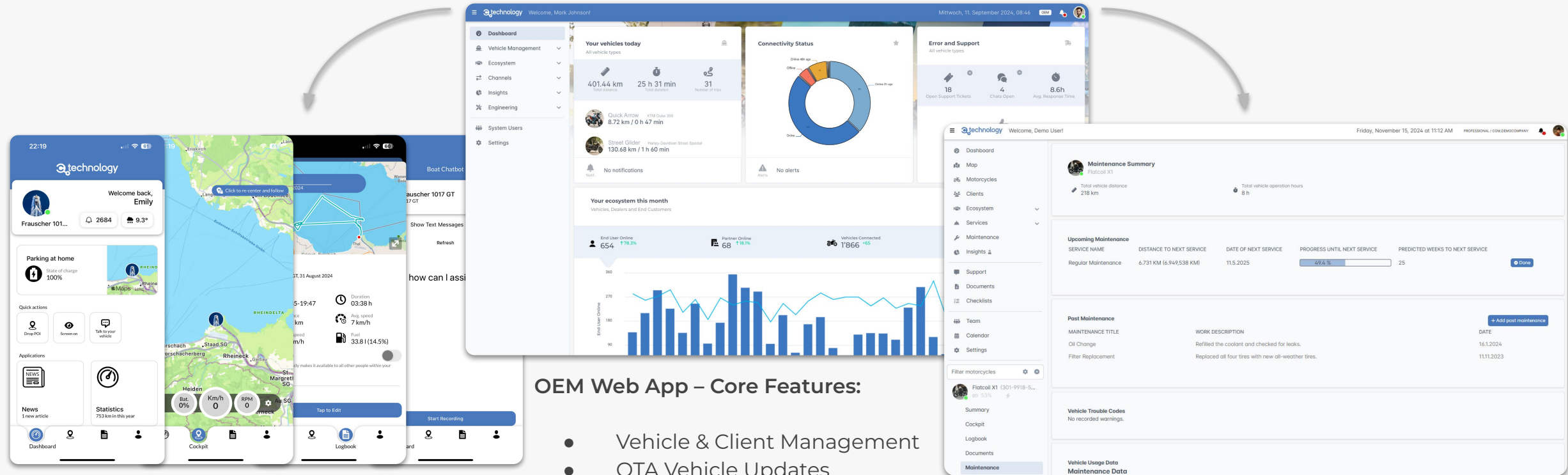
A 360° Digital Approach: c.technology's Holistic Mobility 4.0 Framework



Offering: OEM Dashboard. Dealer Access. White Label Mobile App for End Customers. All Cloud-Powered.



Product Spotlight: A Hardware & Vehicle Agnostic Data Platform



End-Customer Mobile App – Core Features:

- 24/7 Vehicle Connectivity
- In-App Support Chat
- Remote Tracking & Unlock
- Voice-Controlled Access
- White-Label Ready

OEM Web App – Core Features:

- Vehicle & Client Management
- OTA Vehicle Updates
- Engineering Data Access
- Vehicle Data Insights & Analysis
- Communication Tools
- Subscription Service Enablement
- API Integration

Dealer & Partner Web App – Core Features:

- Predictive Maintenance
- Real-Time Support
- Document Sharing
- Fleet Monitoring
- Vehicle Analytics



Powering the Digital Backbone of Leading OEMs



c.technology AG, Tessinerplatz 7, 8002 Zurich, Switzerland



www.ctechnology.io



docs.ctechnology.io



connect@ctechnology.io

We partner with ETH Zurich, Europe's leading technology university and ranked #8 globally, to drive innovation and cutting-edge solutions.

Trusted by Industry Leaders

REED

NOVUS
BE AHEAD



Frauscher
PORSCHE



SUZUKI



GANZ

GOVECS
GROUP

